

64 Tennyson Road, Luton, Bedfordshire, LU1 3RR
£1,100 PCM

- NEWLY REFURBISHED
- CLOSE TO M1
- MODERN FINISH THROUGHOUT

- 2/3 BEDROOMS
- AVAILABLE NOW

- CLOSE TO TOWN
- MUST BE VIEWED

*** P&R PROPERTY LETTINGS *** 2/3 BEDROOM MAISONETTE *** NEWLY REFURBISHED THROUGHOUT *** NEW KITCHEN AND NEW SHOWER ROOM
 *** WHITE GOODS INCLUDED *** MODERN FINISH THROUGHOUT **** CLOSE TO TOWN CENTRE *** CLOSE TO M1 MOTORWAY *** AVAILABLE FOR
 IMMEDIATE MOVE IN *** MUST BE VIEWED ***

ENTRANCE HALL

KITCHEN DINER 9'04 X 8'07 (2.84M X 2.62M)

BEDROOM ONE 11'11 X 9'00 (3.63M X 2.74M)

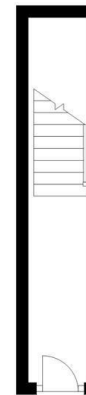
BEDROOM TWO 11'10 X 7'00 (3.61M X 2.13M)

BEDROOM THREE 8'08 X 7'01 (2.64M X 2.16M)

SHOWER ROOM

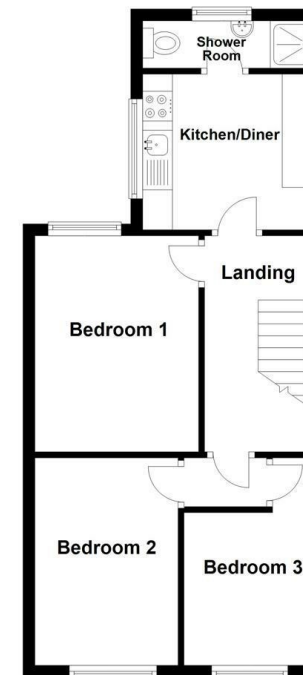
Ground Floor

Approx. 6.1 sq. metres (65.7 sq. feet)



First Floor

Approx. 43.7 sq. metres (470.9 sq. feet)



Total area: approx. 49.8 sq. metres (536.6 sq. feet)

Energy Efficiency Rating		Current	Potential
Very energy efficient - lower running costs			
(92 plus)	A		
(81-91)	B		
(69-80)	C		
(55-68)	D		
(39-54)	E		
(21-38)	F		
(1-20)	G		
Not energy efficient - higher running costs			
England & Wales		EU Directive 2002/91/EC	